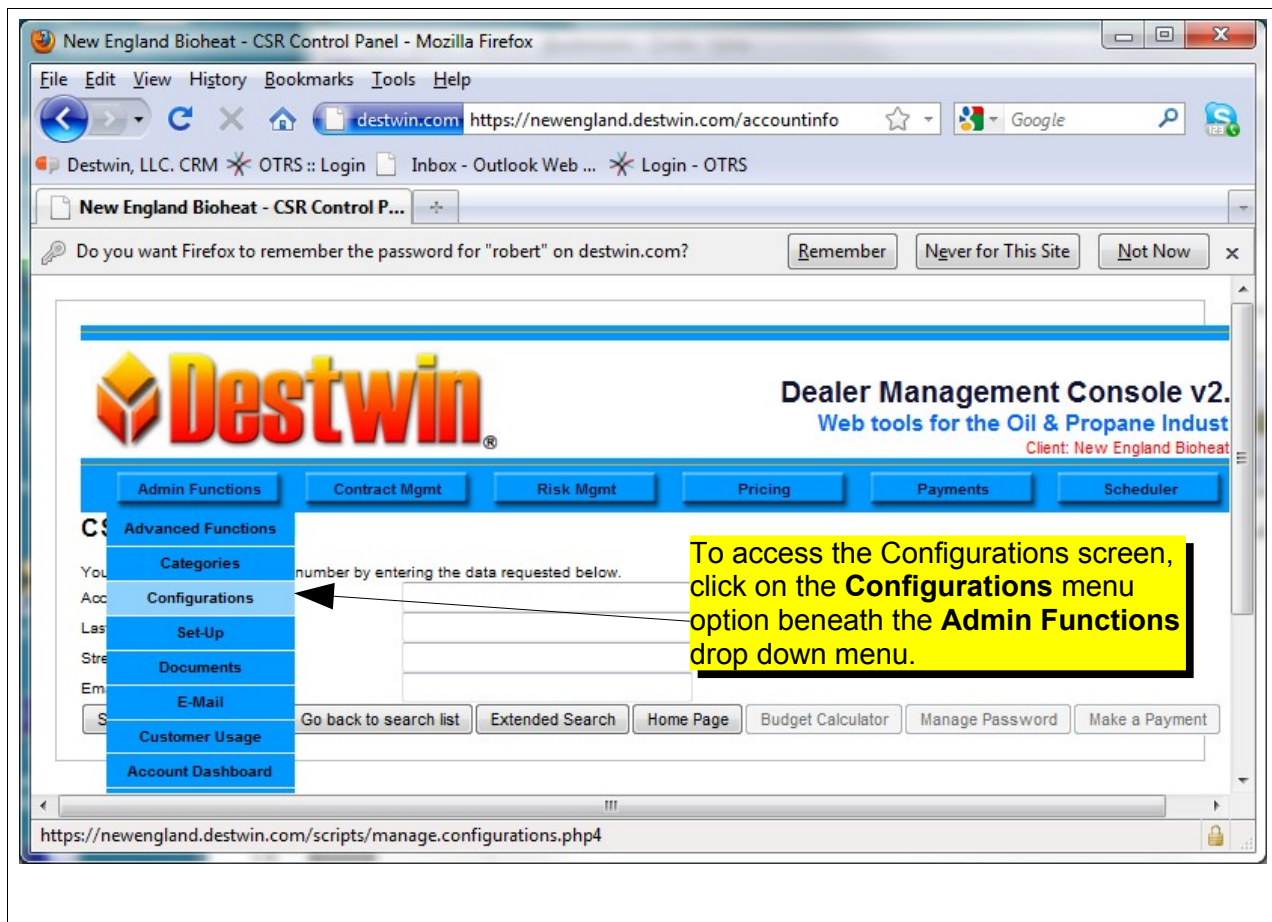


Destwin® Fuel Dealer Solution Quick Reference Guide
Console Version 2.0
How to Edit a Configuration
10-DEC-11

This Quick Reference Guide describes how to edit a Destwin Fuel Dealer Solution system Configuration. Generally you would need to have Administrator privileges to access and edit a Configuration.

CAUTION!
Configurations can affect site behavior in significant ways. If you have any questions about Configurations or how a specific Configuration will affect system behavior, please contact Destwin.

Configurations control some aspects of system behavior and system settings. Many configurations will never need to be changed, some might on occasion.



The **Value** field controls the content or Yes / No flag for system behavior.

The **Name** field is the name of the Configuration and should not be changed.

The **Description** field is for informational purposes and provides a general description for the configuration.

Warning
Do not **Delete** a configuration. This could cause undesired changes to system behavior.

Manage System Configuration

Bookmarks Tools Help

destwin.com

Destwin, LLC. CRM OTRS :: Login Inbox - Outlook Web ... Login - OTRS

New England Bioheat - Manage System Configuration

Name	Value	Description	
1 Activate Scheduler	1	set to 1 to enable scheduling ability (separate from allowing users to schedule things)	Delete
2 Admin Home	/accountinfo		Delete
3 Admin Style	/style/admin/admin-default.css,/style/admin/admin-pagestyle.css, /style/admin/admin-contracts.css,/style/admin/redadminstyle.css, /style/admin/admin-scheduler.css		Delete
4 Allow All Elements on Payment	1	Set to 1 to allow all page elements to be used on payment page (otherwise it will be toponly)	Delete
5 Allow Division	0	Customers only in this division can log in through this storefront	Delete
6 authorize.net credit cards	1	set to 0 or 1 to control if credit card processing is available	Delete
7 authorize.net echecks	1	set to 0 or 1 to control if echeck processing is available	Delete
8 blank image name	blank1x1		Delete
9 Client Name	New England Bioheat		Delete
10 Copyright In Footer	1		Delete
11 customerSignupHeadingDocument	x		Delete
12 echeck test mode	1	set to 1 to enable eCheck testing, which will pretend to be successful	Delete
13 echeckInformationDocument	echedInfoDoc	Name of document to show customers when selecting echeck on payment page	Delete
14 EMAIL DOMAIN	domain.com	domain (e.g. yahoo.com, bwi.com, etc)	Delete
15 Enable ACE	1		Delete
16 Enable PDF Contracts	1		Delete
17 first_page	/user-records	/scripts/site/site_login.php	Delete
18 form_email	support@destwin.com	Default e-mail address to receive notification when a customer submits a simple form.	Delete
19 HIGH TOP	0	Start left and right bar at top of page. Interacts with WIDE TOP and UPPER MENU WIDTH	Delete
20 Home Page	/scripts/index.php4	Home page of the system	Delete
21 Info Email	info@destwin.com	Email address for general inquiries	Delete

Find: email Next Previous Highlight all Match case

Done

Locate the configuration and click on the **Name** field of that configuration to enter an edit screen.

Tech Note

Configurations are either a Yes / No flag set by a 1 or 0, (1 = Yes), or contain content.

New England Bioheat - Update Configuration - Mozilla Firefox

File Edit View History Bookmarks Tools Help

destwin.com https://newengland.destwin.com/scripts/config.act

Destwin, LLC. CRM OTRS :: Login Inbox - Outlook Web ... Login - OTRS

New England Bioheat - Update Confi...

Destwin®

Dealer Management Console v2.1

Web tools for the Oil & Propane Industry

Client: New England Bioheat

Admin Functions Contract Mgmt Risk Mgmt Pricing Payments Scheduler

Update Configuration

Admin Home > Manage Configurations > Update Configuration

[Back to Previous Page](#)

[View Documentation](#)

Fill out all the fields and click "Update" button to create new configuration.

Name form_email

Value support@destwin.com

Description Default e-mail address to receive notification when a customer submits a simple form.

Update Clear

Find: email Next Previous

Done

You may click on the Back to Previous Page link to return to the Configurations page without updating the configuration.

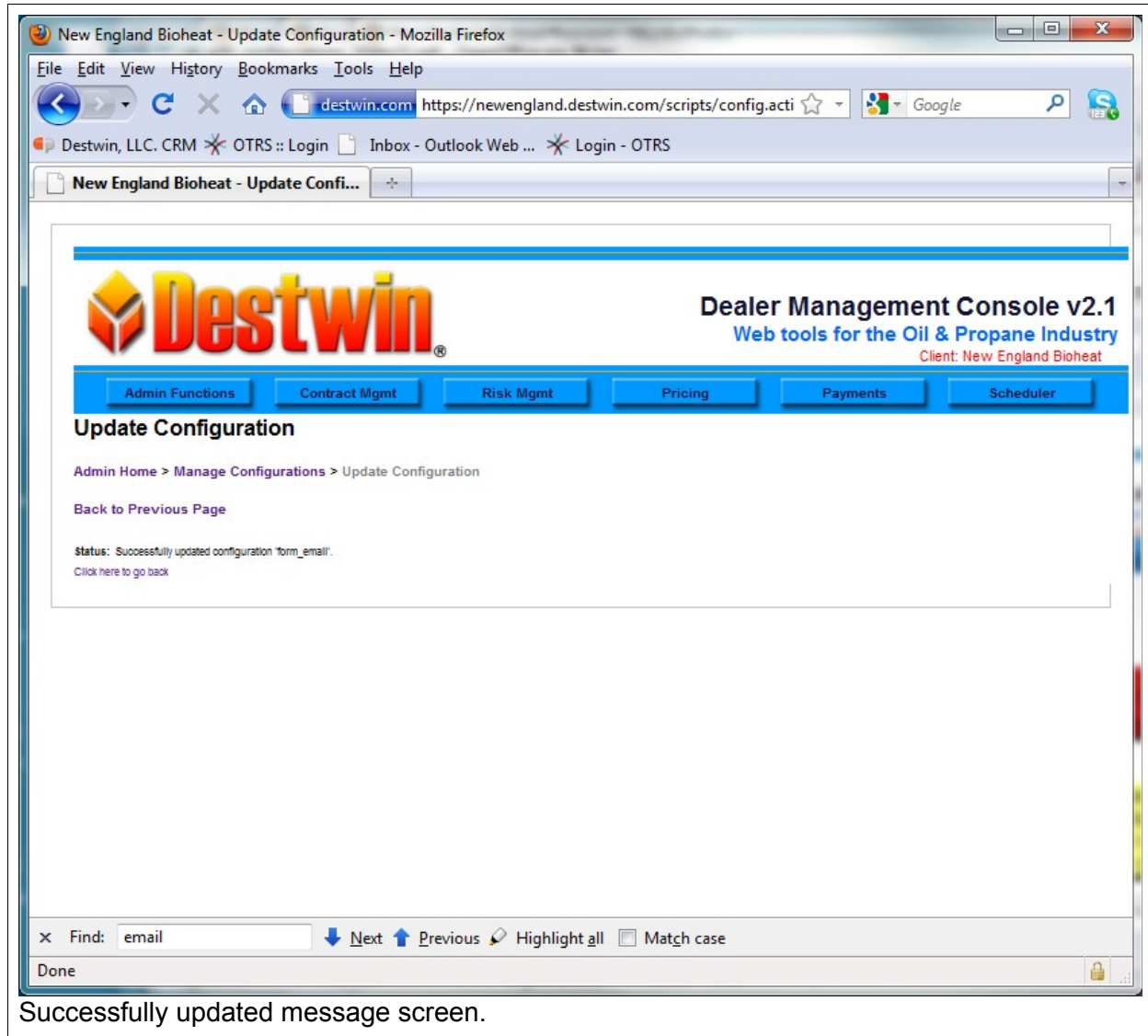
Warning
Do Not change the Name field. This will cause the Configuration to malfunction.

Change the **Value** field as desired to change the Configuration behavior or setting. Click inside the Value box to edit the content.

The **Description** box is for informational purposes only. You may change it if you wish by clicking inside the box.

The **Update** button will update and save the configuration and exit the Edit screen.

The **Clear** button will clear any changes you have made to any of the editable fields in this screen and restore these to the condition these were in when you entered the edit screen.



Successfully updated message screen.